

...

ENVI-MET RISULTATI MODELLAZIONE





```

11:59:59 | 23.07.2013
Sun: h=64.51°; az=140.36° | Time Step=1.00s | T0ref=33.862°C | c0ref=18.139 | lv(1)=0.37;0.78 | T(zn)=30.36°C | T(Facade)=24.79°C

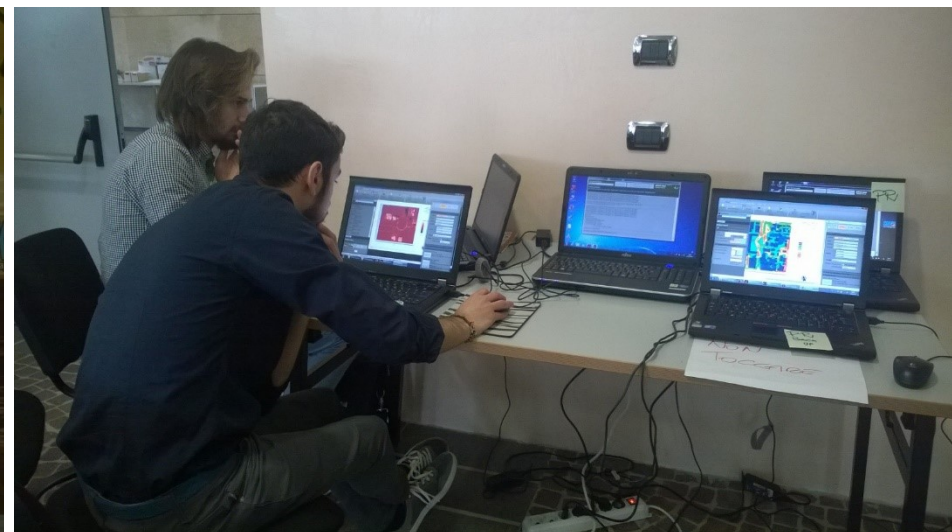
[15:55:06] ENVI-met at 23.07.2013 [10:00:01] Sun: h=51.28° a=97.11° T0ref=303.719 q0ref=18.419
[+02:18:48] Time executed in prognostic flow equation: 11.20 s

Dynamical time step adjustment. Set dt=1 sec. (Class 2)
[+02:43:08] New flow: 1 Steps [101 SOR Steps] du:0.007 dv:0.017 dw:0.007 after 11.30 s total
Maximum divergence in flow field= 0.35586 @ 7,19.5 (absolute)2,14.5 (without nesting grids)
[+03:11:32] New flow: 1 Steps [101 SOR Steps] du:0.007 dv:0.017 dw:0.007 after 11.40 s total
Maximum divergence in flow field= 0.35545 @ 7,19.5 (absolute)2,14.5 (without nesting grids)
[+03:43:13] New flow: 1 Steps [101 SOR Steps] du:0.007 dv:0.016 dw:0.006 after 11.50 s total
Maximum divergence in flow field= 0.35510 @ 7,19.5 (absolute)2,14.5 (without nesting grids)
[+04:14:10] New flow: 1 Steps [1 SOR Steps] du:0.006 dv:0.014 dw:0.006 after 11.60 s total
Maximum divergence in flow field= 0.35499 @ 7,19.5 (absolute)2,14.5 (without nesting grids)

[17:50:45] ENVI-met at 23.07.2013 [11:00:01] Sun: h=59.84° a=117.09° T0ref=305.659 q0ref=18.404
[+04:14:27] Time executed in prognostic flow equation: 11.60 s

[+04:44:53] New flow: 1 Steps [1 SOR Steps] du:0.007 dv:0.015 dw:0.006 after 11.70 s total
Maximum divergence in flow field= 0.35464 @ 7,19.5 (absolute)2,14.5 (without nesting grids)
[+05:17:29] New flow: 1 Steps [57 SOR Steps] du:0.008 dv:0.018 dw:0.008 after 11.80 s total
Maximum divergence in flow field= 0.35409 @ 7,19.5 (absolute)2,14.5 (without nesting grids)
[+05:48:08] New flow: 1 Steps [57 SOR Steps] du:0.008 dv:0.019 dw:0.008 after 11.90 s total
Maximum divergence in flow field= 0.35377 @ 7,19.5 (absolute)2,14.5 (without nesting grids)
[19:52:23] *
$$ I am finished !!
$$ Simulation summary:
Finalized on 23/04/15@19:52:23
Time needed for Init: 00:37:26
Time needed for Main: 06:16:05
Total Time needed: 06:53:32
(Time not correct if date changed)

Thank you for using ENVI-met
Log simulation as finished: SDK-04-PC_23/04/15_12:58:48
  
```



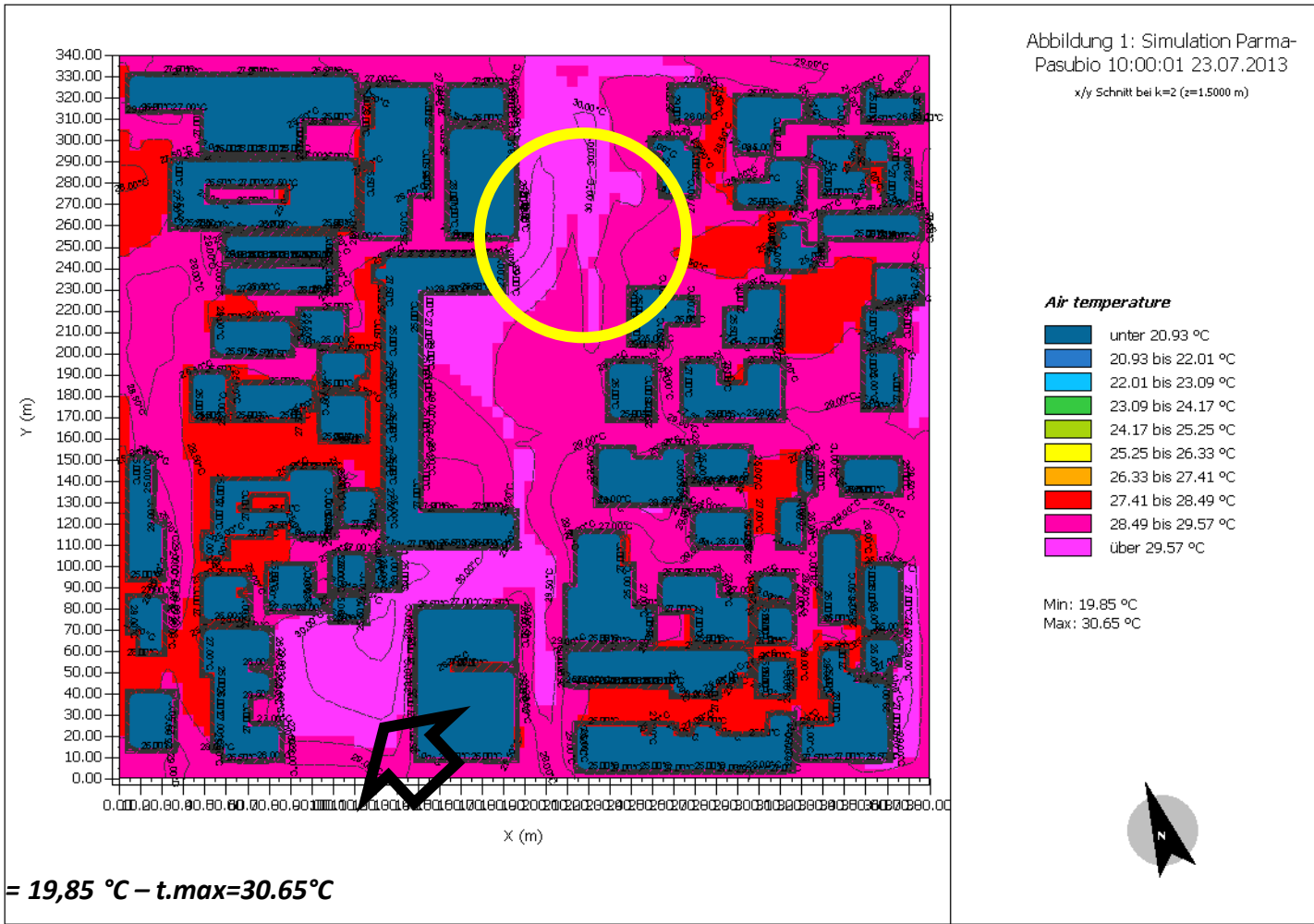


PARMA

PARMA

Parma - Air Temperature

PRIMA



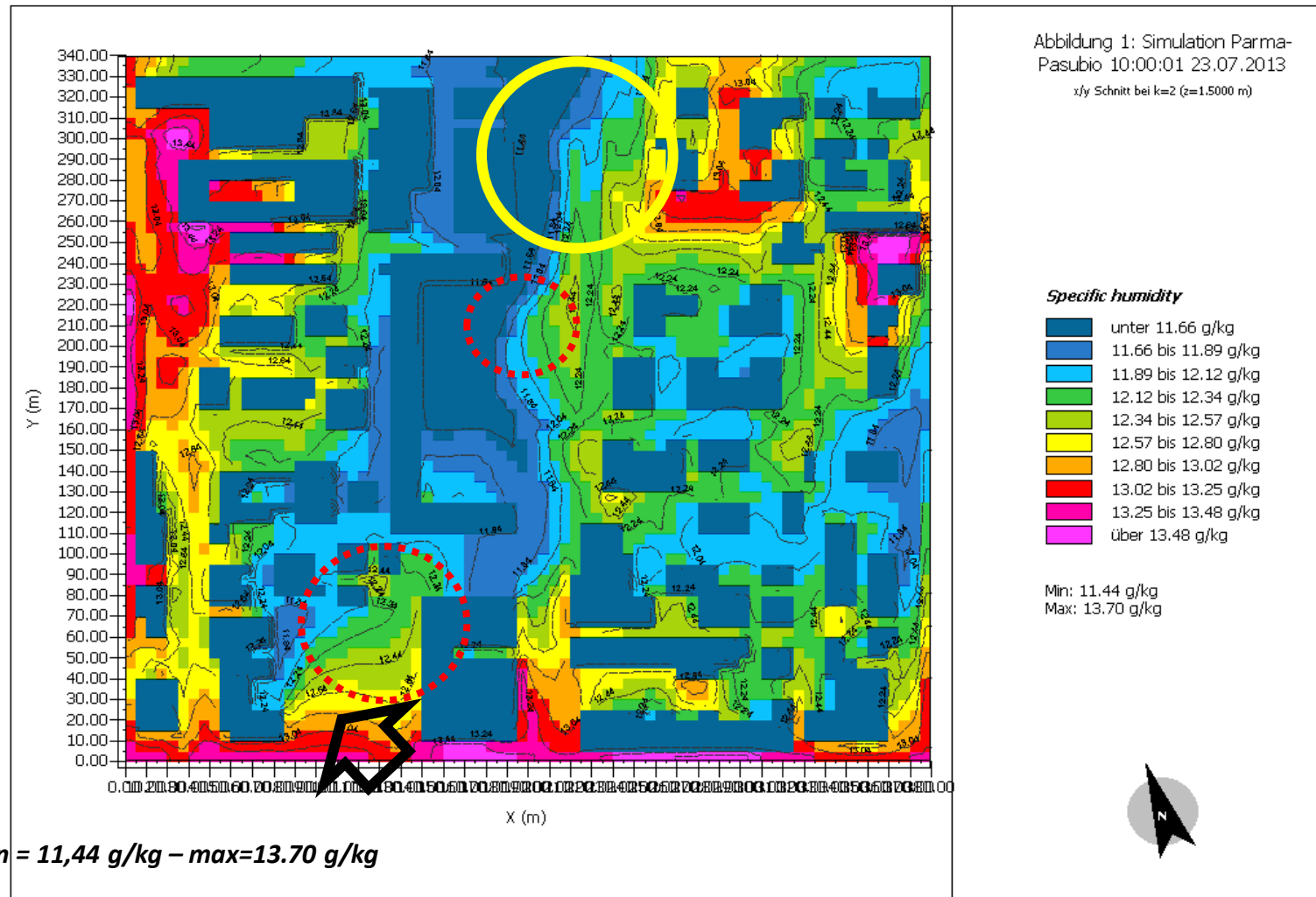
PRIMA → t.min = 19,85 °C – t.max=30.65°C

<Left foot>

<Right foot>

Parma - Specific Humidity

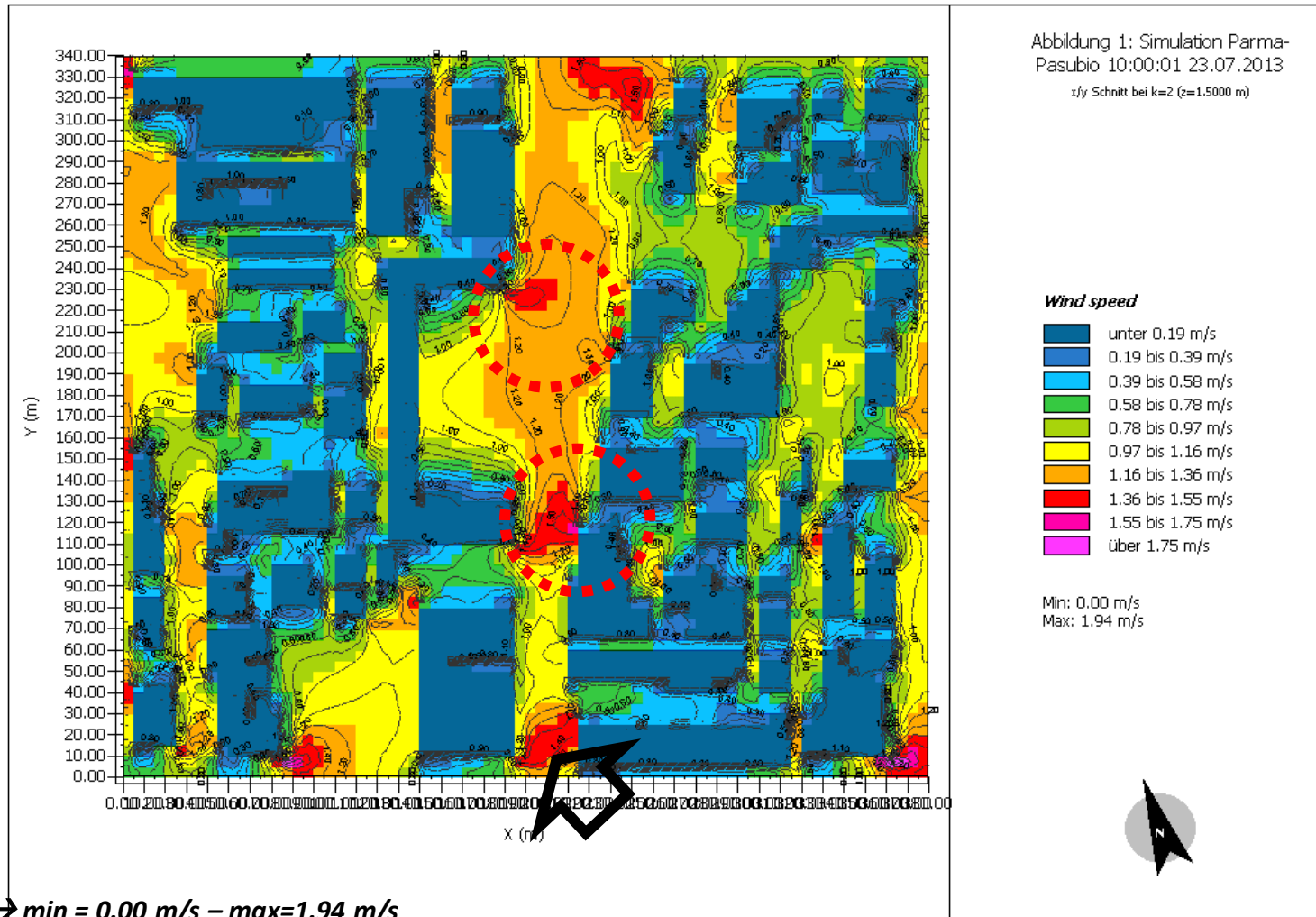
PRIMA



PRIMA → min = 11,44 g/kg – max=13,70 g/kg

Parma - Wind Speed

PRIMA



PRIMA → min = 0.00 m/s – max=1.94 m/s

<Left foot>

<Right foot>

Parma - PMV

PRIMA



<Left foot>

<Right foot>

PRIMA → min = 1.39 – max=1.94

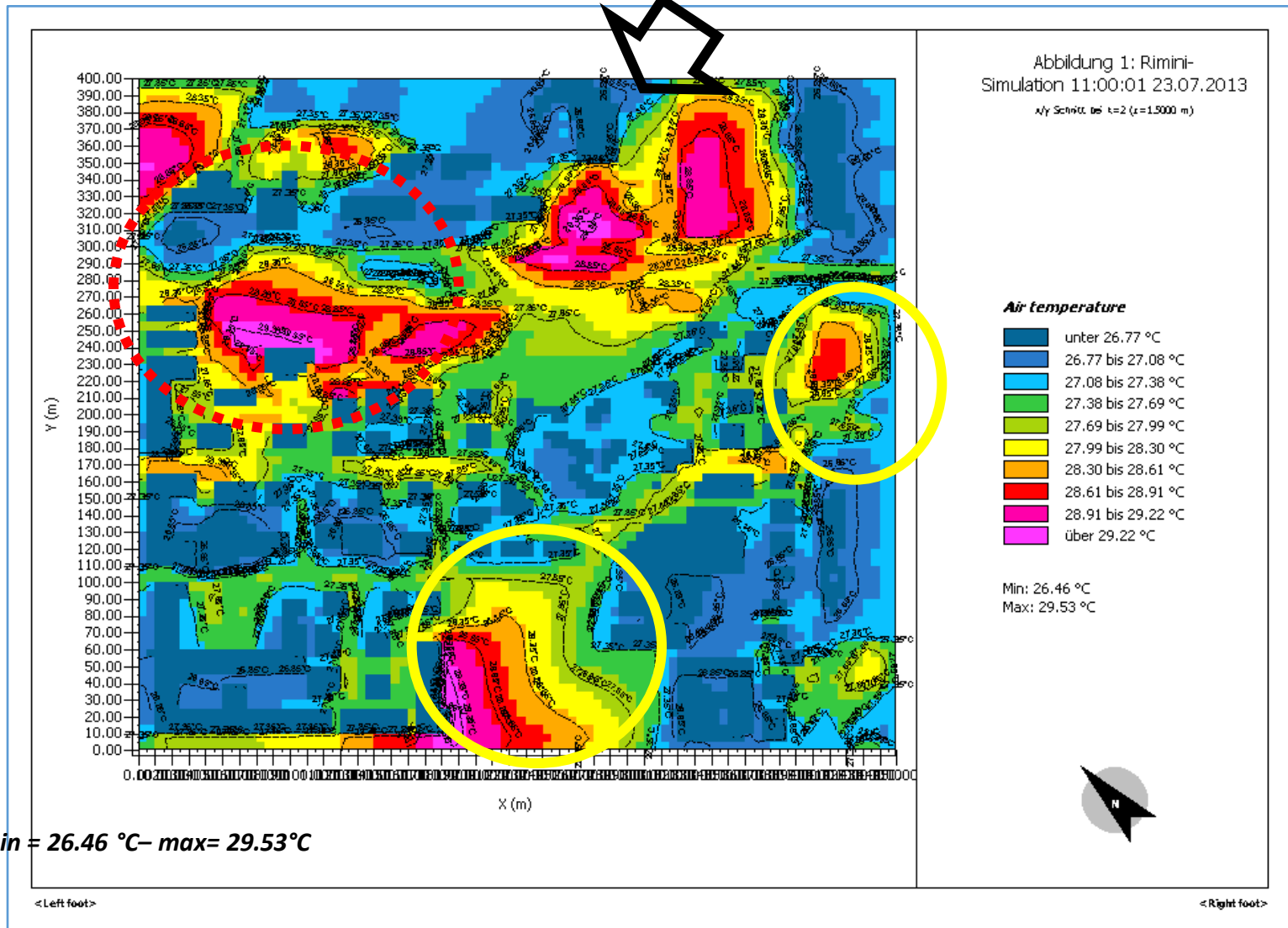


RIMINI

RIMINI

Rimini - Air Temperature

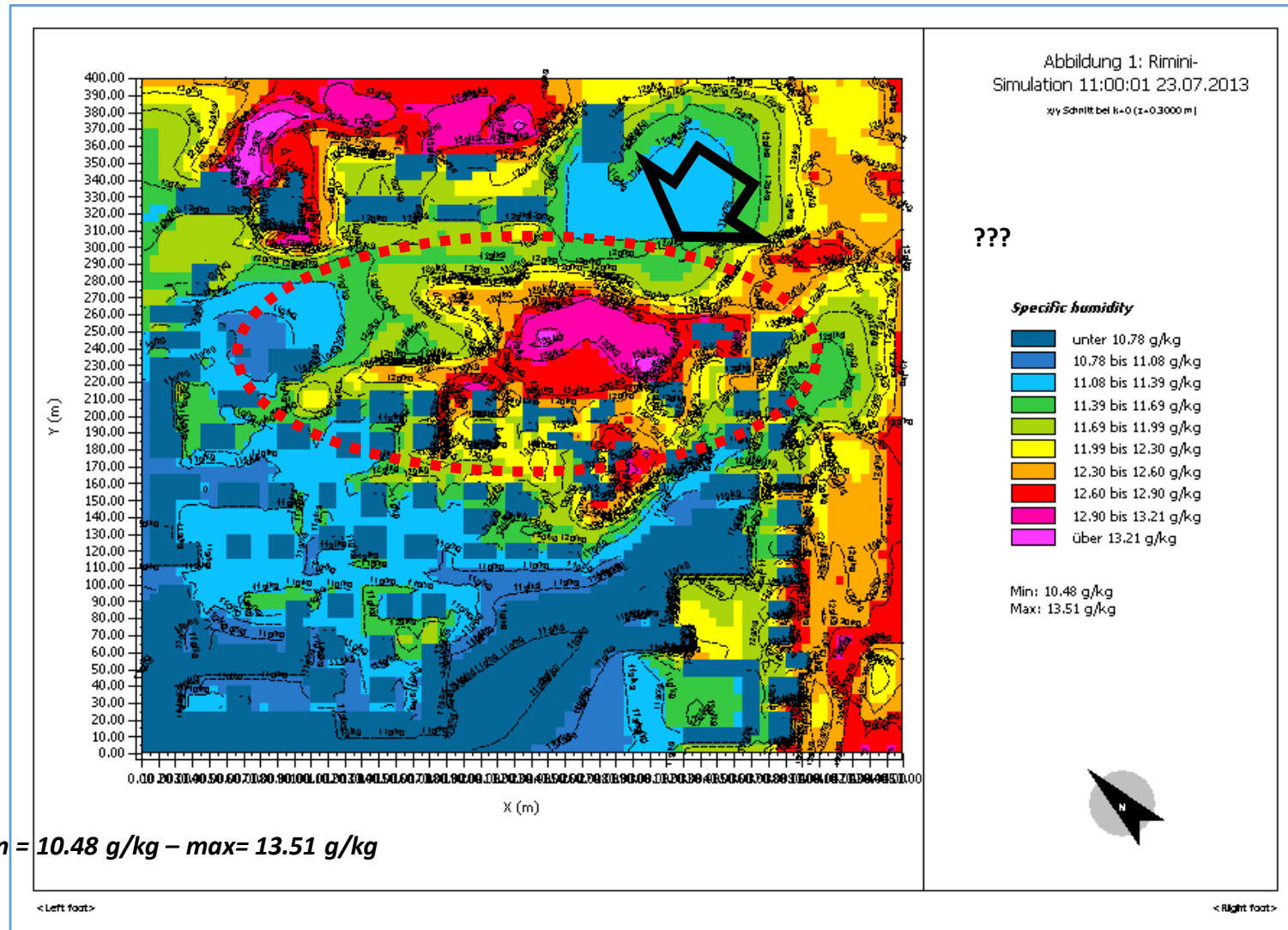
PRIMA



PRIMA → min = 26.46 °C – max = 29.53 °C

Rimini - Specific Humidity

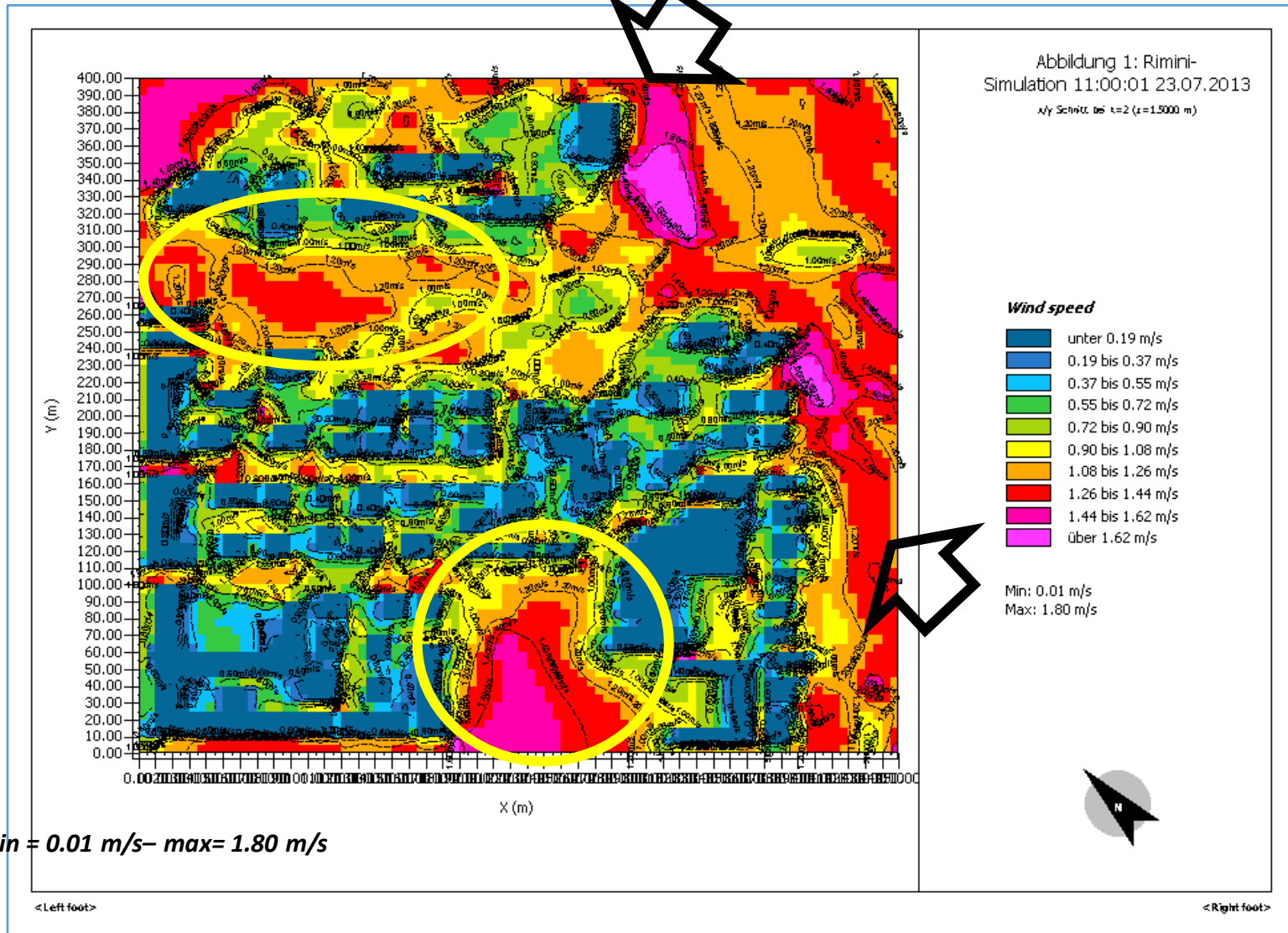
PRIMA



PRIMA → min = 10.48 g/kg – max = 13.51 g/kg

Rimini - Wind Speed

PRIMA

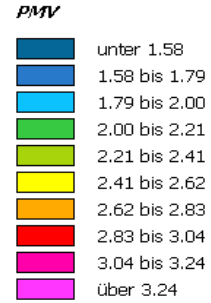


PRIMA → min = 0.01 m/s – max = 1.80 m/s

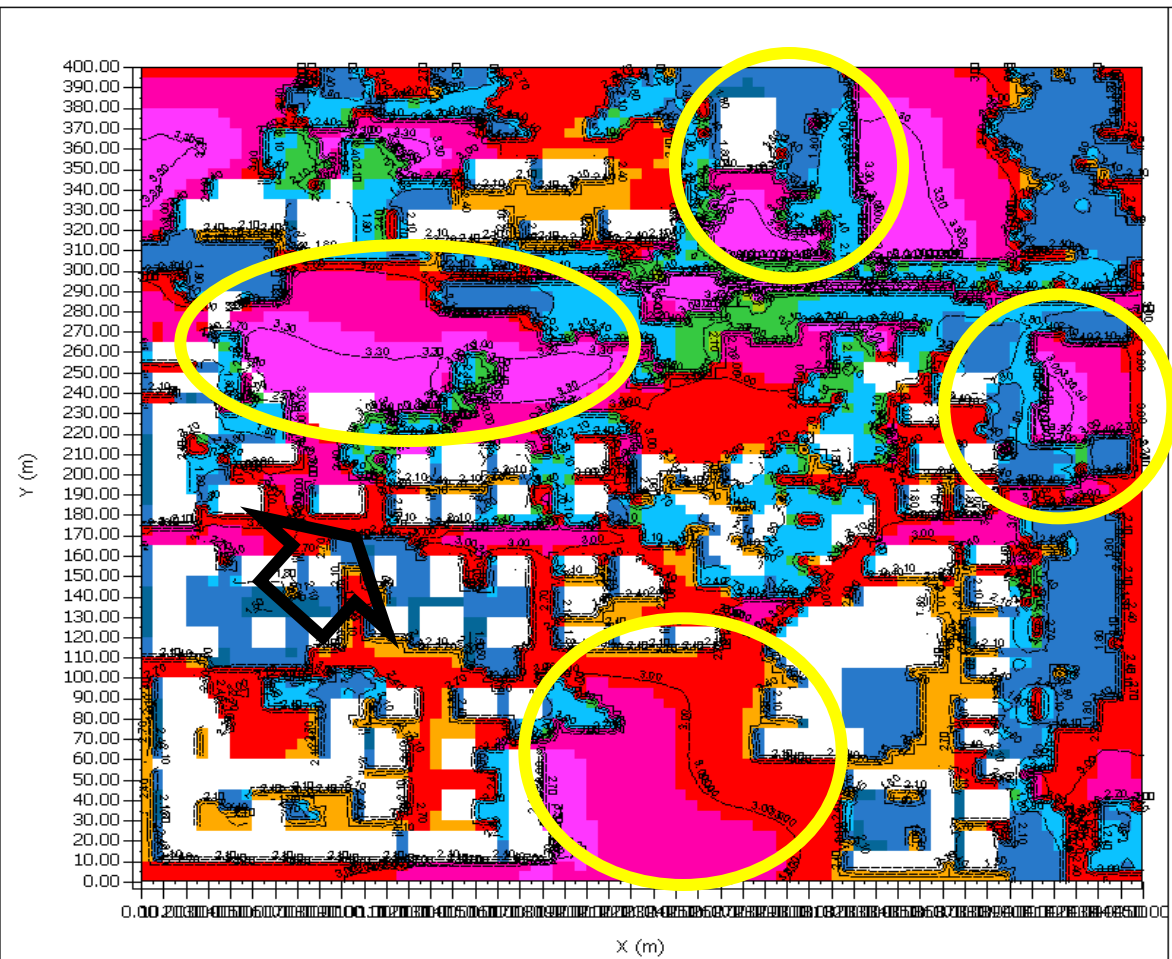
Rimini - PMV

PRIMA

Abbildung 1: Rimini-
Simulation 11:00:01 23.07.2013
x/y Schnitt bei k=0 (z=0.3000 m)



Min: 1.38
Max: 3.45



PRIMA → min = 1.38 – max= 3.45

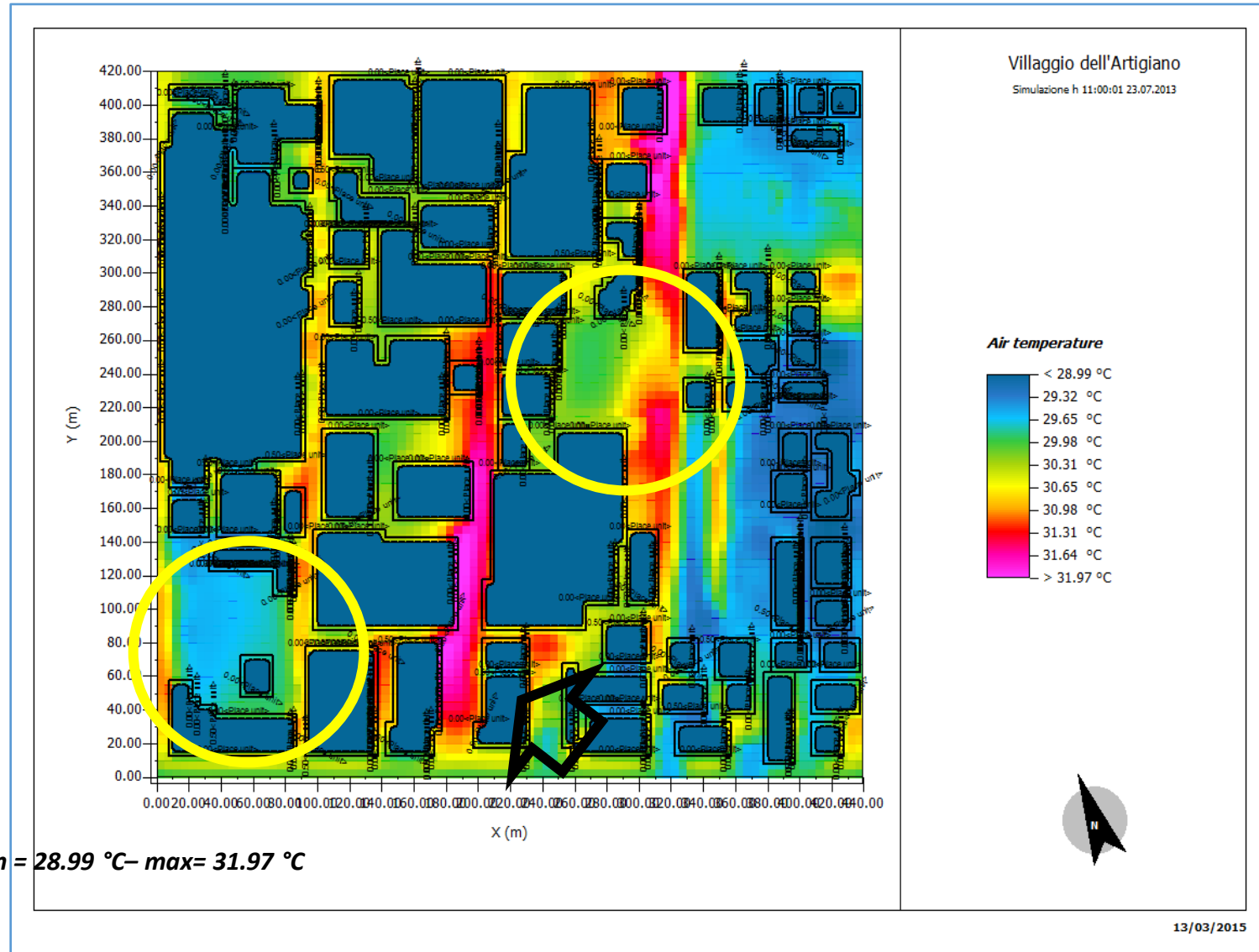


MODENA

MODENA

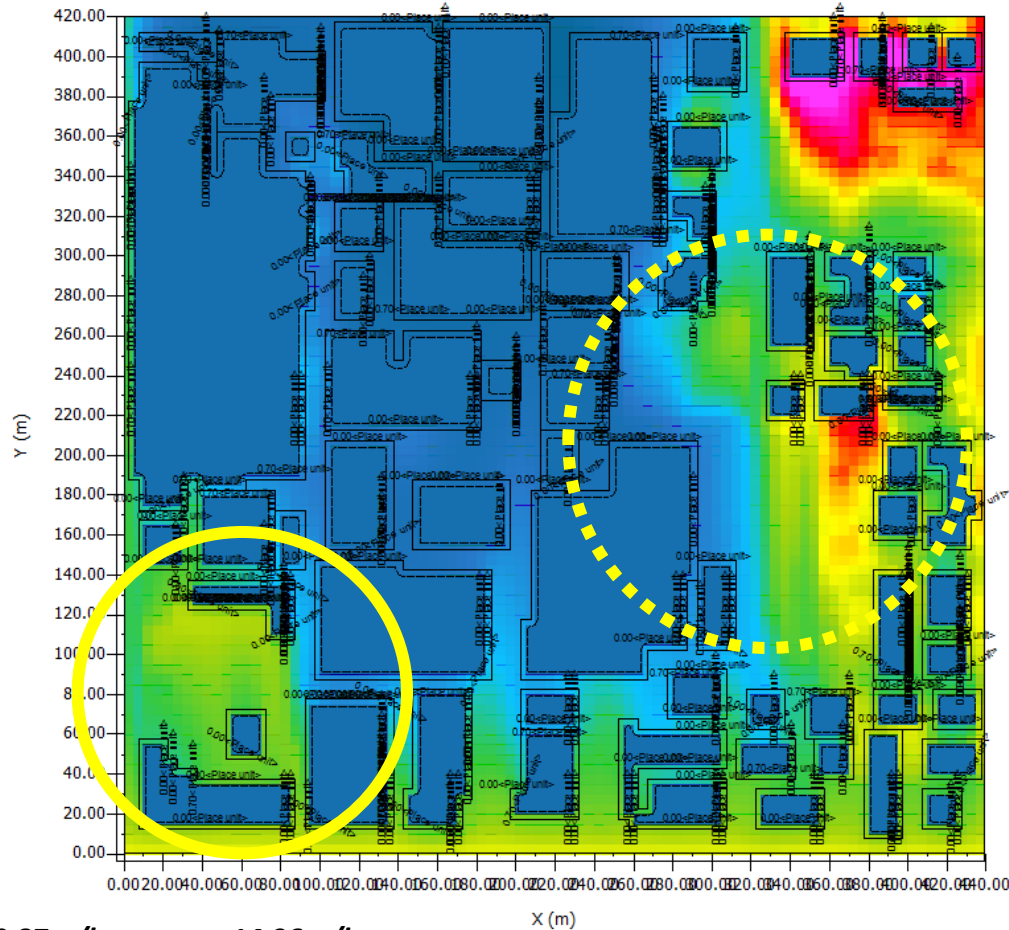
Modena - Air Temperature

PRIMA



Modena- Specific Humidity

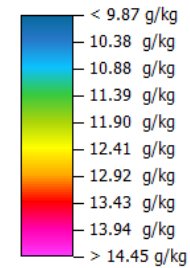
PRIMA



Villaggio dell'Artigiano

Simulazione h 11:00:01 23.07.2013

Specific humidity



Min: 9.87 g/kg

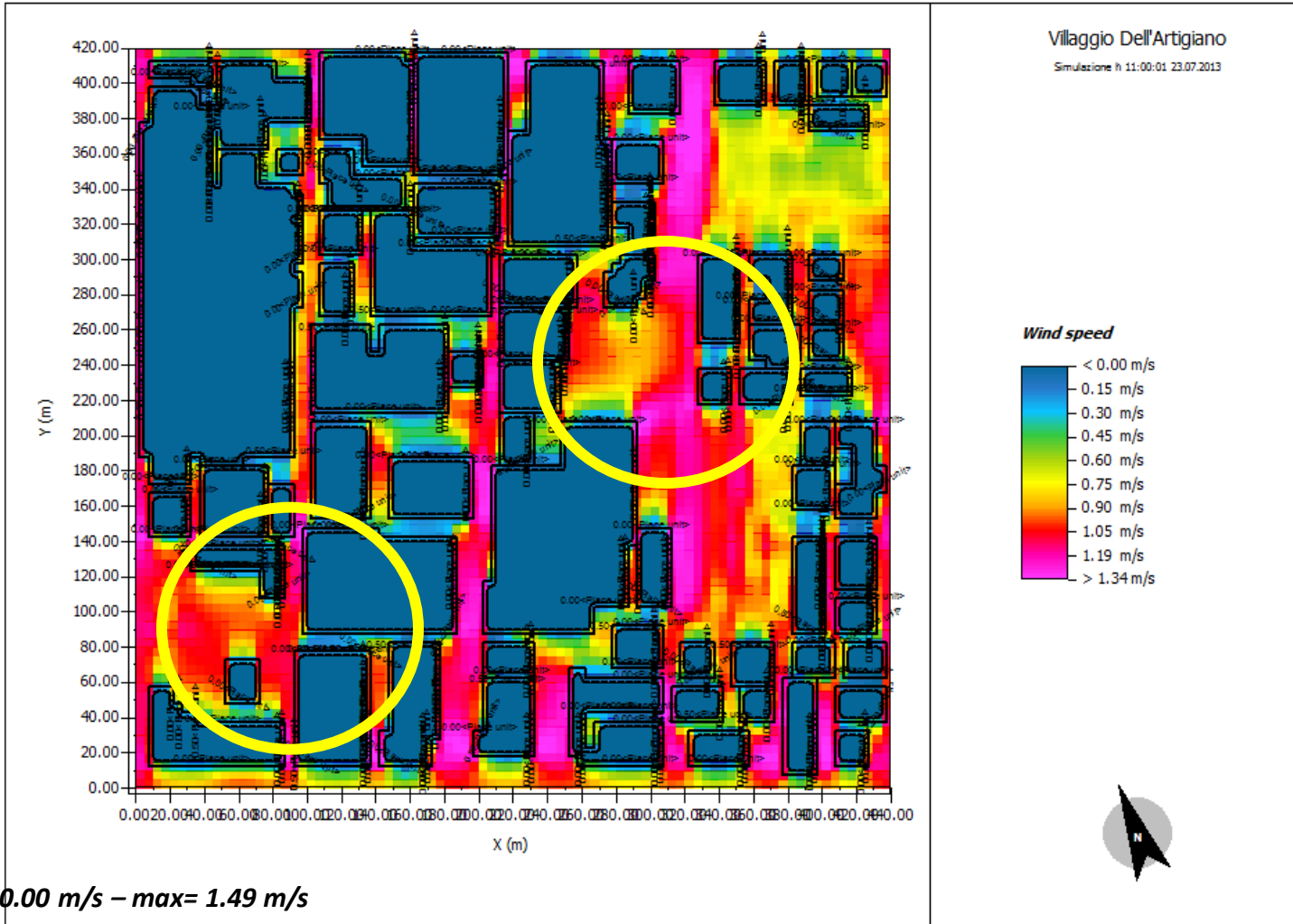
Max: 14.96 g/kg



PRIMA → min = 9.87 g/kg – max= 14.96 g/kg

Modena - Wind Speed

PRIMA



Modena - PMV

PRIMA

